

WIRE ROPE FITTINGS



Global Rope Fittings GmbH

SILVERLINE Products



- Anchor Pendant Sockets
- Closed Spelter Sockets
- Open Spelter Sockets
- Open Wedge Sockets



Introduction

Global Rope Fittings

Global Rope Fittings GmbH is the producer of the **SILVERLINE Sockets**.

Based on our long experience and our knowledge as a producer, we bring our best products to the crane, marine and offshore markets.

As a leading producer of sockets, we are confident we can find a suitable solution for any problem you may have.

We believe that our philosophy of partnership with our customers makes us a reliable supplier and partner.



Global Rope Fittings the best choice for Sockets

Quality

All sockets are made from high-quality cast steel and are suitable for low temperature environments.

All **SILVERLINE Sockets** can be supplied with a manufacturer's certificate and a material certificate. Each socket can be subjected to individual magnetic particle and ultrasonic inspections by an independent agency.



Design

The **SILVERLINE Sockets** have some progressive new design details. The Open Wedge series has extra long jaws for quick assembly. The wedges have a square bottom section to prevent damage to wedge and rope during removal. The Open and Closed Spelter Sockets have a cylindrical base end for better vertical alignment with the wire rope.

All **SILVERLINE Spelter Sockets** have a non-rotation device to prevent the cone from rotating and backing out during transport and/or assembly.

Finish

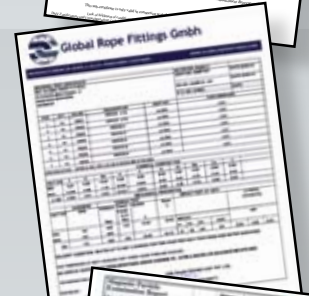
All **SILVERLINE sockets** have a standard finish in dark grey coating (RAL 7024), or can be supplied in hot dipped galvanized finish.



Certificates and Documents

All **SILVERLINE Sockets** can be supplied with a complete certificate comprising:

- Declaration of compliance according to EN 10204-2.1, containing,
 - Certificate number
 - Wire rope diameter
 - Minimum Breaking Load (MBL)
 - Quantity
 - Order number
- EC Declaration according to Machine Directive 98/37/EC
- Material certificate according to EN 10204-3.1 or EN 10204-3.2
- Manufacturer's test certificate according to ILO Convention No. 152
- NDE inspection reports
- Inspection certificate issued by official classification body



Identification / Marking

Each socket is clearly marked with heat number, rope size, type number and logo as showed in the pictures below.



heat number



rope size



type number and logo





Anchor Pendant Sockets

Available for wire rope sizes from \varnothing 37 mm to \varnothing 102 mm (1 1/2" to 4") with an efficiency rating of 100%.

The perfect socket for anchor lines.

Closed Spelter Sockets

Available for wire rope sizes from \varnothing 6 mm to \varnothing 115 mm (1/4" to 4 1/2") with an efficiency rating of 100%.



Open Spelter Sockets

Available for wire rope sizes from \varnothing 6 mm to \varnothing 115 mm (1/4" to 4 1/2") with an efficiency rating of 100%.

Standard version with pin and cotter pin. Also available with bolt, nut and cotter pin.

Open Wedge Sockets

Available in sizes from \varnothing 7 mm to \varnothing 76 mm (5/16" to 3") with an efficiency rating of 80%. Standard version with pin and cotter pin. Also available with bolt, nut and cotter pin.



Warnings and instructions for use

General

The **SILVERLINE sockets** are the strongest on today's market and the best choice for a wire rope termination, but the pouring, use and inspection are the responsibility of the user.

Always inspect a socket, wedge, pin or bolt before using. Do not modify any part. Never do any repairs or welding on a **SILVERLINE socket**. For repairs contact your supplier.

Do not use sockets after being overloaded, side-loaded or shock-loaded. Never use sockets showing cracks or any signs of wear to the bow, pin holes or pins. Incorrect use of sockets may create an unsafe situation and this may result in death or serious injury to personnel and/or damage to equipment.

Spelter Sockets

Spelter socket terminations have an efficiency of 100%, based on the strength of the wire rope, but this is limited by the minimum breaking load of the socket. When using white metal, never expose a socket to a temperature of more than 300 °C (570 °F).

When using synthetic resin, read the instructions, instructions for use and warnings provided by the manufacturer.

Sockets poured with synthetic resin must not be subjected to temperatures exceeding 115 °C (240 °F).

Make sure the broomed wires are uniformly spaced in the basket, with the wire ends at the top of the basket. The axes of the wire rope and the socket must be aligned.

Seal the base of the socket prior to pouring to prevent resin leakage.

Poured sockets should not be moved for at least 15 minutes after the resin in the socket has gelled.

If possible we recommend the assembly to be proof-tested at 2/5 of the working load limit at least 1 hour after the resin in the socket has gelled.

Never use a wire rope with a diameter that deviates from that stated in the tables.

Wedge Sockets

Wedge sockets have an efficiency of 80% based on the minimum breaking load (MBL) of the wire rope.

Do not interchange **SILVERLINE** wedge sockets and wedges with non **SILVERLINE** wedge sockets.

Select the wedge socket for the correct wire rope size. Do not mix wedges with different models or sizes.

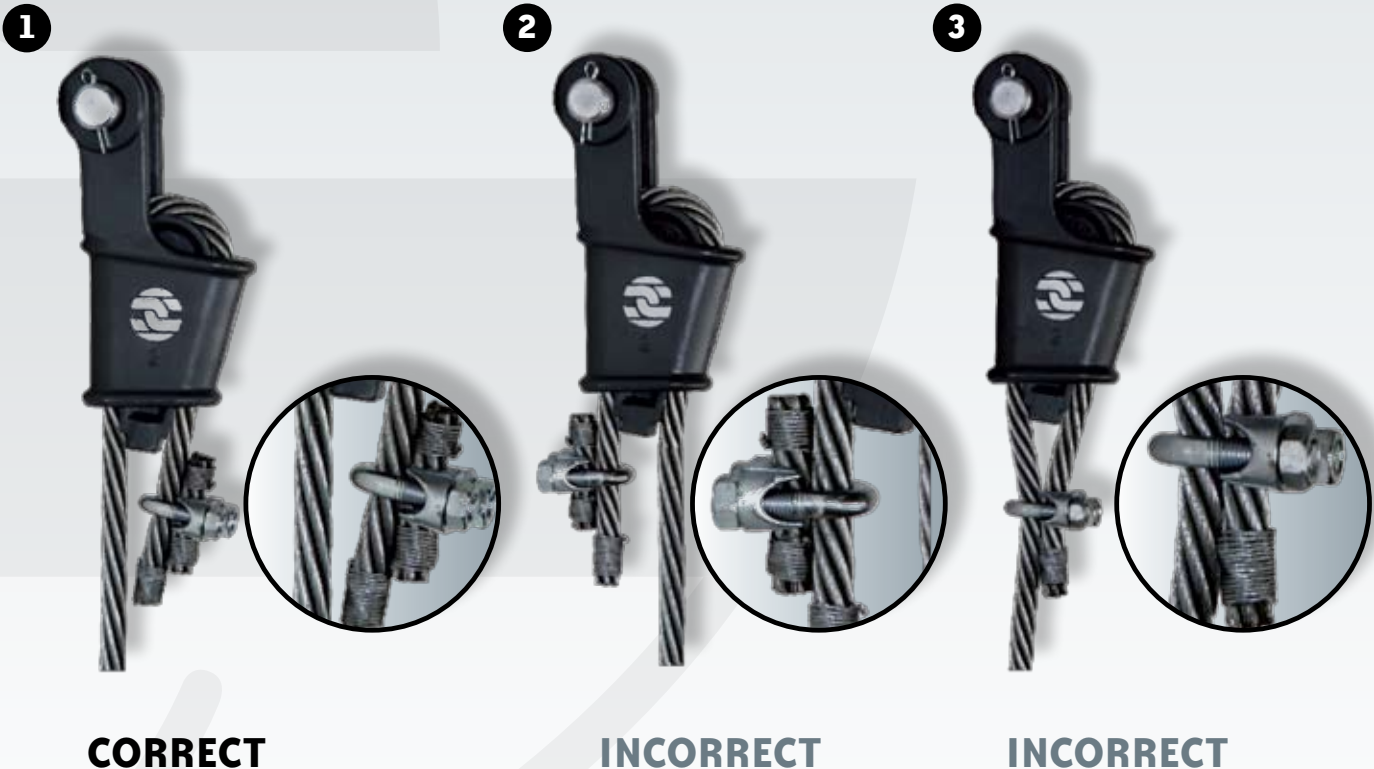
Always mount the loaded wire rope in the centre line of the pin (see figure 1).

The length of the dead end should have a minimum of 6 wire rope diameters but also a minimum of 150 mm.

Secure the dead end with a wire rope clip. Do not attach it to the loaded wire rope (see figure 3).

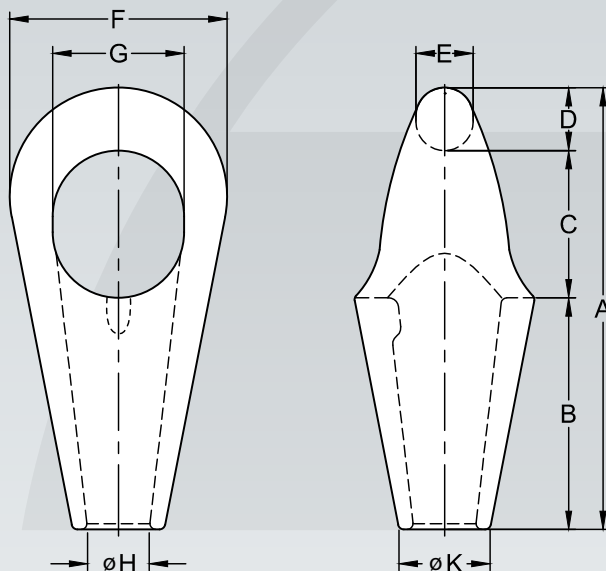
After the first load, check that the wire rope and wedge are fully seated in the socket, as the load may slip if the wedge socket is not properly installed.

The socket has to be fixed against rotation.





Anchor Pendant Sockets



Available for wire rope sizes from \varnothing 37 mm to \varnothing 102 mm
(1 1/2" to 4") with an efficiency rating of 100%.

The perfect socket for anchor lines.



SILVERLINE

Anchor pendant socket. METRIC DIMENSIONS.

Model nr.	MBL (Mtons)	for wire ϕ		Approximate resin volume (cc)	Dimensions (mm)										Weight (kg)
		mm	inch		A	B	C	D	E	F	G	ϕ H	ϕ K		
APS 517	160	37-42	1 $\frac{1}{2}$ -1 $\frac{5}{8}$	500	309	162	103	44	40	152	92	46	67	11	
APS 519	200	43-48	1 $\frac{3}{4}$ -1 $\frac{7}{8}$	700	369	193	123	53	48	176	110	53	74	16	
APS 522	250	49-54	2-2 $\frac{1}{8}$	1250	408	210	140	58	52	200	125	58,5	83	22	
APS 524	320	55-60	2 $\frac{1}{4}$ -2 $\frac{3}{8}$	1425	452	230	157	65	58	226	140	68	96	31	
APS 526	400	61-68	2 $\frac{1}{2}$ -2 $\frac{5}{8}$	1850	499	250	174	75	66	250	156	76	107	42	
APS 527	500	69-75	2 $\frac{3}{4}$ -2 $\frac{7}{8}$	2300	551	280	191	80	70	275	171	80	115	54	
APS 528	600	76-80	3-3 $\frac{1}{8}$	3400	591	309	196	86	76	290	180	89	125	70	
APS 529	700	81-86	3 $\frac{1}{4}$ -3 $\frac{3}{8}$	4100	643	332	211	100	90	304	188	94	133	85	
APS 530	800	87-93	3 $\frac{1}{2}$ -3 $\frac{5}{8}$	5200	685	360	220	105	95	332	210	99	142	118	
APS 531	900	94-102	3 $\frac{3}{4}$ -4	7700	722	375	235	112	101	366	220	110	157	142	
APS 533	1000	108-115	4 $\frac{1}{4}$ -4 $\frac{1}{2}$	10500	818	420	270	126	112	405	240	128	180	180	

Anchor pendant socket. INCH DIMENSIONS.

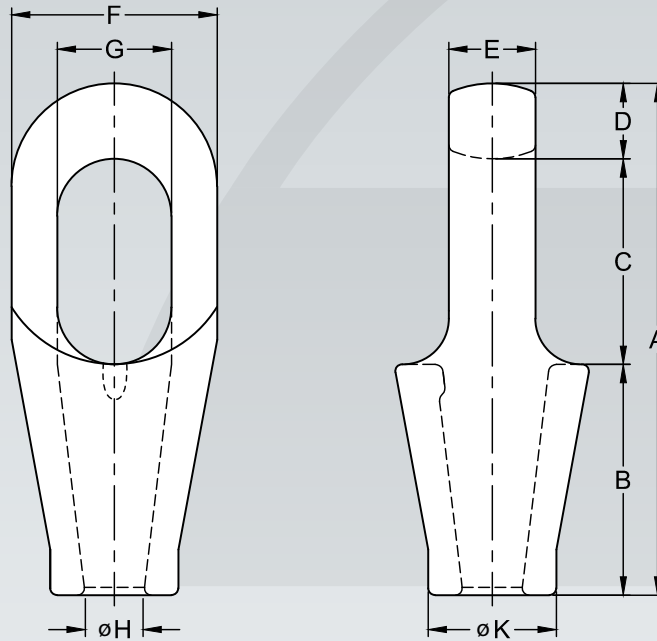
Model nr.	MBL (Mtons)	for wire ϕ		Approximate resin volume (cc)	Dimensions (Inch)										Weight (LBS)
		mm	inch		A	B	C	D	E	F	G	ϕ H	ϕ K		
APS 517	160	37-42	1 $\frac{1}{2}$ -1 $\frac{5}{8}$	500	12,16	6,38	4	1,73	1,57	6	3,62	1,8	2,64	24	
APS 519	200	43-48	1 $\frac{3}{4}$ -1 $\frac{7}{8}$	700	14,5	7,6	4,84	2,1	1,9	6,93	4,33	2,1	2,91	36	
APS 522	250	49-54	2-2 $\frac{1}{8}$	1250	16	8,27	5,5	2,28	2	7,87	4,92	2,3	3,27	48	
APS 524	320	55-60	2 $\frac{1}{4}$ -2 $\frac{3}{8}$	1450	17,8	9,06	6,18	2,56	2,28	8,9	5,5	2,7	3,78	68	
APS 526	400	61-68	2 $\frac{1}{2}$ -2 $\frac{5}{8}$	1850	19,6	9,84	6,85	2,95	2,6	9,84	6,14	3	4,2	92	
APS 527	500	69-75	2 $\frac{3}{4}$ -2 $\frac{7}{8}$	2300	21,7	11	7,5	3,15	2,76	10,8	6,73	3,15	4,5	119	
APS 528	600	76-80	3-3 $\frac{1}{8}$	3400	23,3	12,16	7,7	3,38	3	11,4	7,1	3,5	4,9	155	
APS 529	700	81-86	3 $\frac{1}{4}$ -3 $\frac{3}{8}$	4100	25,3	13,1	8,3	3,94	3,54	12	7,4	3,7	5,2	187	
APS 530	800	87-93	3 $\frac{1}{2}$ -3 $\frac{5}{8}$	5200	27	14,2	8,7	4,1	3,74	13,1	8,25	3,9	5,6	260	
APS 531	900	94-102	3 $\frac{3}{4}$ -4	7700	28,4	14,8	9,25	4,4	4	14,4	7,7	4,33	6,2	310	
APS 533	1000	108-115	4 $\frac{1}{4}$ -4 $\frac{1}{2}$	10500	32,2	16,5	10,6	5	4,4	16	9,5	5	7,1	400	

MBL = Minimum Breaking Load.

Our standard sockets are delivered in dark grey coating (RAL 7024). Hot dipped galvanized is also available. All sockets can be provided with Declaration of compliance according EN 10204-2.1. Material certificate according EN 10204-3.1 and EC Declaration according machine directive 98/37/EC.



Closed Spelter Sockets



Available for wire rope sizes from \varnothing 6 mm to \varnothing 115 mm
($1/4''$ to $4 1/2''$) with an efficiency rating of 100%.

SILVERLINE

Closed spelter socket. METRIC DIMENSIONS.

Model nr.	MBL (Mtons)	for wire ø		Approximate resin volume (cc)	Dimensions (mm)									Weight (kg)
		mm	inch		A	B	C	D	E	F	G	ø H	ø K	
CSS 296	8	6-7	1/4	10	102	46	45	11	14	38	22	10	20	0.3
CSS 297	12	8-10	3/8	20	120	54	52	14	17.5	44	24	13,5	26	0.5
CSS 298	20	11-13	7/16-1/2	35	140	64	59	17	23	53	30	15	30	0.7
CSS 299	25	14-16	9/16-5/8	50	162	76	65	21	26	64	36	18,5	38.5	1.3
CSS 200	40	18-19	3/4	80	194	89	78	27	32	75	42	22,5	46	2.1
CSS 201	55	20-22	7/8	125	224	101	90	33	38	90	50	26,8	55	3.6
CSS 204	75	23-26	1	160	253	114	103	36	45	101	57	29,5	62	5.1
CSS 207	90	27-30	1 1/8	210	282	127	116	39	51	114	65	34	70	7
CSS 212	125	31-36	1 1/4-1 3/8	350	312	139	130	43	57	127	71	40	83	10.4
CSS 215	150	37-39	1 1/2	425	358	152	155	51	63	140	80	44,5	90	15
CSS 217	170	40-42	1 5/8	500	390	165	171	54	70	148	84	48	97	18.5
CSS 219	225	43-48	1 3/4-1 7/8	700	443	190	198	55	76	171	95	53	112	27.5
CSS 222	280	49-54	2-2 1/8	1250	502	216	224	62	82	193	111	58,5	125	39.5
CSS 224	360	55-60	2 1/4-2 3/8	1425	550	229	248	73	92	219	125	68,5	135	51
CSS 226	425	61-68	2 1/2-2 5/8	1850	597	248	270	79	102	241	140	77,5	150	67
CSS 227	460	69-75	2 3/4-2 7/8	2300	644	279	286	79	124	273	159	83	160	96
CSS 228	560	76-80	3-3 1/8	3400	689	305	298	86	133	292	171	89	170	118
CSS 229	625	81-86	3 1/4-3 3/8	4100	736	330	311	95	146	311	184	95	180	142
CSS 230	720	87-93	3 1/2-3 5/8	5200	788	356	330	102	159	330	197	99	200	175
CSS 231	875	94-102	3 3/4-4	7700	845	381	356	108	178	362	216	110	215	230
CSS 233	1200	108-115	4 1/4-4 1/2	10500	965	440	400	125	190	405	235	128	250	315

Closed spelter socket. INCH DIMENSIONS.

Model nr.	MBL (Mtons)	for wire ø		Approximate resin volume (cc)	Dimensions (inch)									Weight (LBS)
		mm	inch		A	B	C	D	E	F	G	ø H	ø K	
CSS 296	8	6-7	1/4	10	4	1,81	1,77	0,43	0,55	1,5	0,87	0,39	0,78	0,7
CSS 297	12	8-10	3/8	20	4,7	2,16	2	0,55	0,69	1,74	0,95	0,53	1,02	1,1
CSS 298	20	11-13	7/16-1/2	35	5,5	2,52	2,32	0,67	0,91	2,1	1,18	0,6	1,18	1,6
CSS 299	25	14-16	9/16-5/8	50	6,4	3	2,56	0,83	1,02	2,52	1,42	0,73	1,52	3
CSS 200	40	18-19	3/4	80	7,6	3,5	3,07	1,06	1,26	2,95	1,65	0,89	1,81	4,5
CSS 201	55	20-22	7/8	125	8,8	4	3,54	1,3	1,5	3,54	1,97	1,05	2,17	8
CSS 204	75	23-26	1	160	10	4,5	4,05	1,42	1,77	4	2,24	1,16	2,44	11
CSS 207	90	27-30	1 1/8	210	11,1	5	4,6	1,54	2	4,5	2,56	1,39	2,76	15
CSS 212	125	31-36	1 1/4-1 3/8	350	12,3	5,5	5,12	1,7	2,24	5	2,8	1,57	3,27	23
CSS 215	150	37-39	1 1/2	425	14,1	6	6,1	2	2,48	5,6	3,1	1,75	3,5	33
CSS 217	170	40-42	1 5/8	500	15,4	6,5	6,7	2,13	2,76	5,9	3,2	1,9	3,8	41
CSS 219	225	43-48	1 3/4-1 7/8	700	17,4	7,5	7,8	2,17	3	6,7	3,74	2,1	4,4	61
CSS 222	280	49-54	2-2 1/8	1250	19,8	8,5	8,5	2,4	3,23	7,6	4,37	2,3	4,9	87
CSS 224	360	55-60	2 1/4-2 3/8	1425	21,7	9	9,76	2,87	3,63	8,6	4,92	2,7	5,3	112
CSS 226	425	61-68	2 1/2-2 5/8	1850	23,5	9,76	10,6	3,1	4	9,5	5,5	3,05	5,9	148
CSS 227	460	69-75	2 3/4-2 7/8	2300	25,4	11	11,3	3,1	4,9	10,7	6,3	3,25	6,3	211
CSS 228	560	76-80	3-3 1/8	3400	27,1	12	11,7	3,4	5,2	11,5	6,7	3,5	6,7	258
CSS 229	625	81-86	3 1/4-3 3/8	4100	29	13	12,2	3,7	5,7	12,3	7,2	3,75	7,1	312
CSS 230	720	87-93	3 1/2-3 5/8	5200	31	14	13	4	6,5	13	7,8	3,9	7,9	385
CSS 231	875	94-102	3 3/4-4	7700	33,3	15	14	4,3	7	14,3	8,5	4,33	8,5	506
CSS 233	1200	108-115	4 1/4-4 1/2	10500	38	17,3	15,7	5	7,5	16	9,3	5	9,8	695

MBL = Minimum Breaking Load.

Our standard sockets are delivered in dark grey coating (RAL 7024). Hot dipped galvanized is also available. All sockets can be provided with Declaration of compliance according EN 10204-2.1. Material certificate according EN 10204-3.1 and EC Declaration according machine directive 98/37/EC.

FOR MORE INFORMATION SEE OUR WARNINGS AND INSTRUCTIONS FOR USE

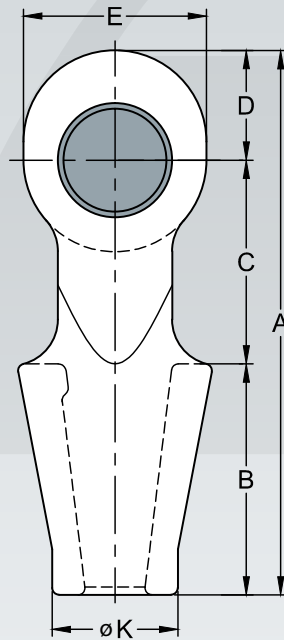
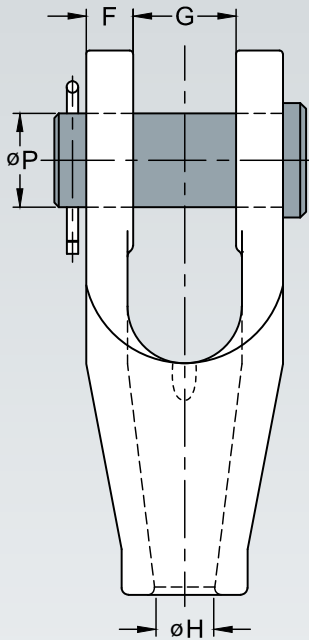


Global Rope Fittings GmbH

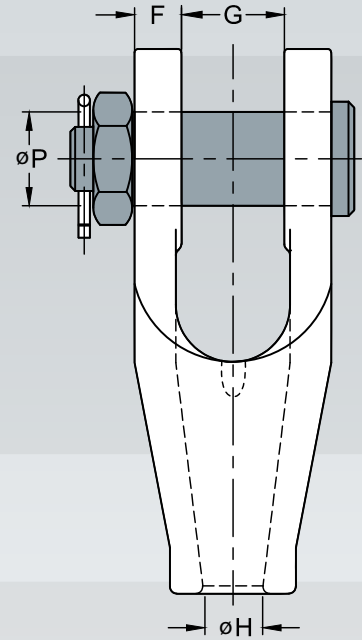


Open Spelter Sockets

with pin



with bolt



Available for wire rope sizes from $\varnothing 6$ mm to $\varnothing 115$ mm
($1/4''$ to $4 1/2''$) with an efficiency rating of 100%.

Standard version with pin and cotter pin. Also available
with bolt, nut and cotter pin.

SILVERLINE

Open spelter socket. METRIC DIMENSIONS.

Модель	MBL (Mtons)	диаметр каната ϕ		Приблизительный объем заливки (cc)	Размеры (mm)											Вес (кг)
		mm	inch		A	B	C	D	E	F	G	ϕ H	ϕ K	ϕ P		
OSS 196 P	8	6-7	1/4	10	105	46	40	19	34	9	18	10	20	17.5	0.4	
OSS 197 P	12	8-10	3/8	20	122	57	45	23	40	11.2	20.6	13.5	26	20.6	0.8	
OSS 198 P	20	11-13	7/16-1/2	35	142	64	51	27	48	12.7	25.6	15	30	25.4	1.1	
OSS 199 P	25	14-16	9/16-5/8	50	171	76	63	32	56	14.5	32	18.5	38.5	30	1.9	
OSS 100 P	40	18-19	3/4	80	205	89	76	40	68	16.5	38	22.5	46	35	3.2	
OSS 104 P	55	20-22	7/8	125	238	101	89	48	80	20.5	45	26.8	55	41	5.3	
OSS 108 P	75	23-26	1	160	273	114	101	57	98	22.5	51	29.5	62	51	8.4	
OSS 111 P	90	27-30	1 1/8	210	306	127	114	65	110	25	57	34	70	57	11.3	
OSS 115 P	125	31-36	1 1/4-1 3/8	350	337	139	127	71	122	28	63	40	83	63	16	
OSS 118 P	150	37-39	1 1/2	425	394	152	162	80	140	30	76	44.5	90	70	23	
OSS 120 P	170	40-42	1 5/8	500	415	165	165	85	148	33.5	76	48	97	76	29	
OSS 125 P	225	43-48	1 3/4-1 7/8	700	467	191	178	98	170	39	89	53	112	89	43	
OSS 128 P	280	49-54	2-2 1/8	1250	552	216	228	108	186	46	101	58.5	125	95	64	
OSS 130 P	360	55-60	2 1/4-2 3/8	1425	603	229	254	120	210	53	113	68.5	135	108	85	
OSS 132 P	425	61-68	2 1/2-2 5/8	1850	654	248	273	133	230	60	127	77.5	150	121	119	
OSS 135 P	460	69-75	2 3/4-2 7/8	2300	696	279	279	138	240	73	133	83	160	127	158	
OSS 138 P	560	76-80	3-3 1/8	3400	736	305	286	145	250	76	146	89	170	133	186	
OSS 140 P	625	81-86	3 1/4-3 3/8	4100	790	330	300	160	275	79	159	95	180	140	227	
OSS 142 P	720	87-93	3 1/2-3 5/8	5200	849	356	318	175	300	82	172	99	200	152	280	
OSS 144 P	875	94-102	3 3/4-4	7700	922	381	343	198	336	89	191	110	215	178	375	
OSS 146 P	1200	108-115	4 1/4-4 1/2	10500	1110	440	450	220	370	100	205	128	250	195	525	

Open spelter socket. INCH DIMENSIONS.

Model nr.	MBL (Mtons)	for wire ϕ		Approximate resin volume (cc)	Dimensions (inch)											Weight (LBS)
		mm	inch		A	B	C	D	E	F	G	ϕ H	ϕ K	ϕ P		
OSS 196 P	8	6-7	1/4	10	4,13	1,81	1,6	0,75	1,34	0,35	0,71	0,39	0,78	0,69	0,9	
OSS 197 P	12	8-10	3/8	20	4,8	2,16	1,8	0,9	1,57	0,44	0,81	0,53	1,02	0,81	1,8	
OSS 198 P	20	11-13	7/16-1/2	35	5,6	2,52	2	1,1	1,89	0,5	1	0,6	1,18	1	2,4	
OSS 199 P	25	14-16	9/16-5/8	50	6,7	3	2,5	1,3	2,2	0,57	1,26	0,73	1,52	1,19	4,2	
OSS 100 P	40	18-19	3/4	80	8,1	3,5	3	1,6	2,76	0,65	1,5	0,89	1,81	1,38	7	
OSS 104 P	55	20-22	7/8	125	9,4	4	3,5	1,9	3,15	0,81	1,75	1,05	2,17	1,63	11,7	
OSS 108 P	75	23-26	1	160	10,7	4,5	4	2,3	4	0,89	2	1,16	2,44	2	18	
OSS 111 P	90	27-30	1 1/8	210	12	5	4,5	2,6	4,33	1	2,25	1,39	2,76	2,25	25	
OSS 115 P	125	31-36	1 1/4-1 3/8	350	13,3	5,5	5	2,8	4,8	1,1	2,5	1,57	3,27	2,5	35	
OSS 118 P	150	37-39	1 1/2	425	15,5	6	6,4	3,15	5,52	1,18	3	1,75	3,5	2,75	51	
OSS 120 P	170	40-42	1 5/8	500	16,3	6,5	6,5	3,35	5,9	1,3	3	1,9	3,8	3	64	
OSS 125 P	225	43-48	1 3/4-1 7/8	700	18,4	7,5	7	3,86	6,7	1,53	3,5	2,1	4,4	3,5	95	
OSS 128 P	280	49-54	2-2 1/8	1250	21,7	8,5	9	4,25	7,3	1,81	4	2,3	4,9	3,75	141	
OSS 130 P	360	55-60	2 1/4-2 3/8	1425	23,7	9	10	4,72	8,27	2,1	4,5	2,7	5,3	4,25	190	
OSS 132 P	425	61-68	2 1/2-2 5/8	1850	25,7	9,7	10,7	5,23	9,1	2,36	5	3,05	5,9	4,75	260	
OSS 135 P	460	69-75	2 3/4-2 7/8	2300	27,4	11	11	5,43	9,45	2,9	5,25	3,25	6,3	5	348	
OSS 138 P	560	76-80	3-3 1/8	3400	29	12	11,3	5,7	9,84	3	5,75	3,5	6,7	5,25	410	
OSS 140 P	624	81-86	3 1/4-3 3/8	4100	31,1	13	11,8	6,3	10,83	3,12	6,25	3,75	7,1	5,5	500	
OSS 142 P	720	87-93	3 1/2-3 5/8	5200	33,4	14	12,5	6,9	11,8	3,25	6,75	3,9	7,9	6	615	
OSS 144 P	875	94-102	3 3/4-4	7700	36,3	15	13,5	7,8	13,2	3,5	7,5	4,33	8,5	7	825	
OSS 146 P	1200	108-115	4 1/4-4 1/2	10500	43,7	17,3	17,7	8,7	14,6	4	8,1	5	9,8	7,7	1150	

MBL = Minimum Breaking Load.

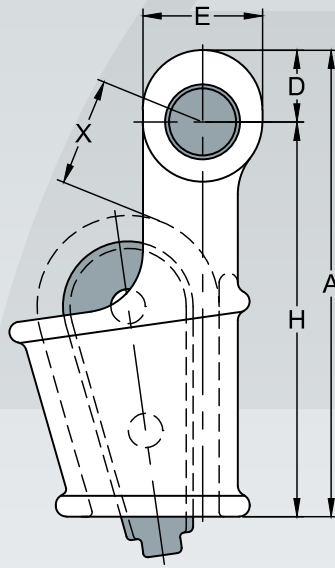
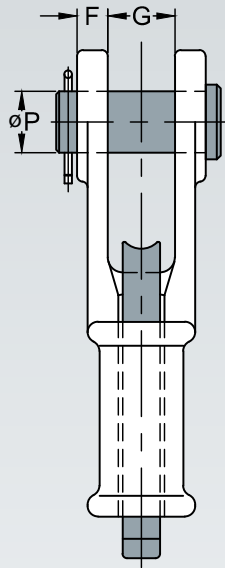
Our standard sockets are delivered in dark grey coating (RAL 7024). Hot dipped galvanized is also available. All sockets can be provided with Declaration of compliance according EN 10204-2.1. Material certificate according EN 10204-3.1 and EC Declaration according machine directive 98/37/EC.



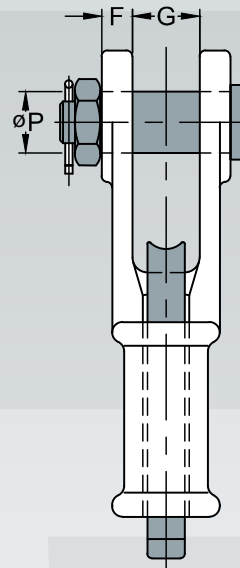


Open Wedge Sockets

with pin



with bolt



Available in sizes from $\varnothing 7$ mm to $\varnothing 76$ mm ($5/16$ " to 3") with an efficiency rating of 80%. Standard version with pin and cotter pin. Also available with bolt, nut and cotter pin.

SILVERLINE

Open wedge socket. METRIC DIMENSIONS.

Model nr.	MBL (Mtons)	for wire ϕ		Dimensions (mm)								Weight (kg)
		mm	inch	A	D	E	F	G	H	ϕP	X	
OWS 0.25 P	8	7 - 8	5/16	130	20	34	9	18	110	17.5	40	0,7
OWS 0.5 P	12	9 - 10	3/8	150	23	40	11	20.5	125	20.6	45	1,2
OWS 1 P	20	11 - 13	1/2	183	27	48	12.7	25.6	156	25.4	60	2,3
OWS 2 P	25	14 - 16	5/8	224	32	56	14.5	32	192	30	65	3,6
OWS 3 P	40	17 - 19	3/4	272	40	70	16.5	38	232	35	70	6,3
OWS 4 P	55	20 - 22	7/8	312	48	80	20.5	45	264	41	80	10,3
OWS 5 P	75	23 - 26	1	370	58	100	22.5	51	312	51	90	16
OWS 6 P	90	27 - 29	1 1/8	413	65	110	25	57	348	57	100	21,5
OWS 7 P	110	30 - 32	1 1/4	455	71	122	28	63	384	63	110	30
OWS 8 P	125	34 - 36	1 3/8	508	76	132	28	70	432	63	125	36
OWS 9 P	150	37 - 39	1 1/2	548	80	140	30	76	468	70	140	50
OWS 10 P	170	40 - 42	1 5/8	589	85	150	33	76	504	76	155	60
OWS 11 P	225	43 - 48	1 3/4 - 1 7/8	674	98	170	39	89	576	89	175	90
OWS 12 P	280	49 - 52	2	733	108	186	46	101	625	95	195	125
OWS 13 P	360	54 - 58	2 1/4	816	120	210	53	113	696	108	220	175
OWS 14 P	425	60 - 68	2 1/2	950	133	230	60	127	817	121	250	250
OWS 15 P	460	72 - 76	3	1057	145	250	76	146	912	133	280	400

Open wedge socket. INCH DIMENSIONS.

Model nr.	MBL (Mtons)	for wire ϕ		Dimensions (inch)								Weight (LBS)
		mm	inch	A	D	E	F	G	H	ϕP	X	
OWS 0.25 P	8	7-8	5/16	5,12	0,8	1,34	0,35	0,7	4,3	0,69	1,6	1,6
OWS 0.5 P	12	9-10	3/8	5,9	0,9	1,6	0,43	0,83	4,92	0,81	1,77	2,6
OWS 1 P	20	11-13	1/2	7,2	1,06	1,9	0,5	1	6,14	1	2,36	4,6
OWS 2 P	25	14-16	5/8	8,8	1,26	2,2	0,57	1,26	7,56	1,18	2,56	8
OWS 3 P	40	17-19	3/4	10,7	1,58	2,76	0,65	1,5	9,13	1,38	2,76	14
OWS 4 P	55	20-22	7/8	12,3	1,9	3,15	0,81	1,77	10,4	1,6	3,15	22,5
OWS 5 P	75	23-26	1	14,6	2,28	3,94	0,89	2	12,3	2	3,54	35
OWS 6 P	90	27-29	1 1/8	16,3	2,6	4,33	1	2,25	13,7	2,25	3,94	47,5
OWS 7 P	110	30-32	1 1/4	17,9	2,8	4,8	1,1	2,5	15,1	2,5	4,33	66
OWS 8 P	125	34-36	1 3/8	20	3	5,2	1,1	2,75	17	2,5	4,92	79
OWS 9 P	150	37-39	1 1/2	21,5	3,15	5,5	1,2	3	18,4	2,75	5,5	110
OWS 10 P	170	40-42	1 5/8	23,2	3,35	5,9	1,3	3	19,85	3	6,1	132
OWS 11 P	225	43-48	1 3/4 - 1 7/8	26,5	3,86	6,7	1,53	3,5	22,7	3,5	6,9	198
OWS 12 P	280	49-52	2	28,9	4,25	7,32	1,81	4	24,6	3,75	7,7	275
OWS 13 P	360	54-58	2 1/4	32,1	4,7	8,26	2,1	4,5	27,4	4,25	8,66	385
OWS 14 P	425	60-68	2 1/2	37,4	5,24	9,1	2,36	5	32,1	4,75	9,84	550
OWS 15 P	460	72-76	3	41,6	5,7	9,84	3	5,75	35,9	5,25	11	880

X = depending on the actual wire rope diameter, rope construction and fill factor.

MBL = Minimum Breaking Load.

Our standard sockets are delivered in dark grey coating (RAL 7024). Hot dipped galvanized is also available. All sockets can be provided with Declaration of compliance according EN 10204-2.1. Material certificate according EN 10204-3.1 and EC Declaration according machine directive 98/37/EC.

THE QUALITY NAME IN ROPE FITTINGS



www.globalropefittings.com

Stockholmer Strasse 11 ■ 48455 Bad Bentheim ■ Germany

T: +49 (0) 5924 29947-0 ■ F: +49 (0) 5924 29947-29 ■ E: sales@globalropefittings.com